

# Programme II Stage

## FIXED RESILIENT SYSTEMS

Programme II Stage offers stabilizing components of steel encased sleepers supported by TriPower™ resilient pads manufactured from recycled rubber material. Along with shock absorbing characteristics, a monolithic sub-floor layer allows numerous floor surface options and loading capabilities associated with stage performances.

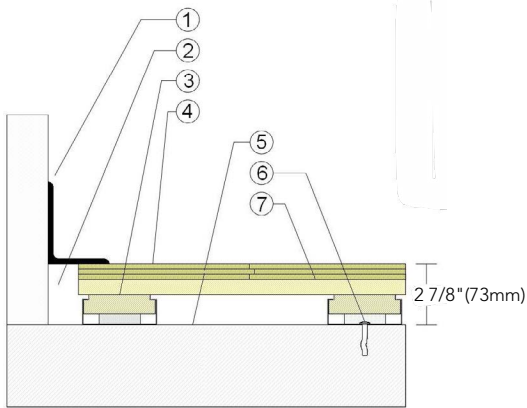


**INFINITY**  
Wood Floors



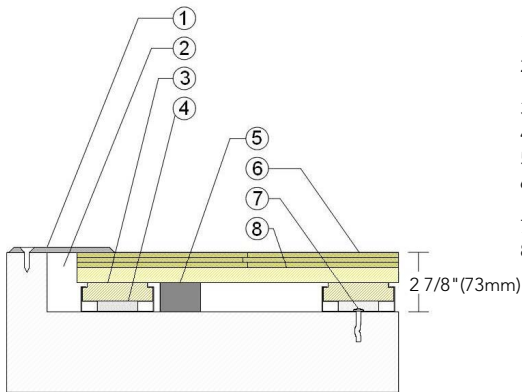
# Programme II Stage

## WALLBASE Maple Floor Surface



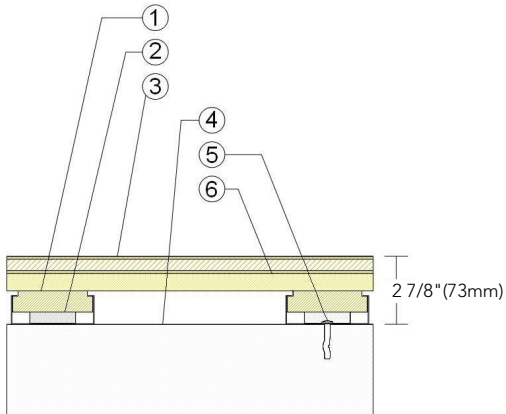
1. 3" x 4" (76mm x 101mm) Vent Cove Base
2. 1-1/2" (38mm) Perimeter Expansion Space
3. Steel Encased Plywood Sleeper with 1/2" (12mm) TriPower Pad
4. 25/32" (20mm) MFMA Maple Flooring
5. Vapor Retarder
6. Steel Concrete Anchor
7. 23/32" (19mm) Plywood Subfloor

## THRESHOLD Maple Floor Surface



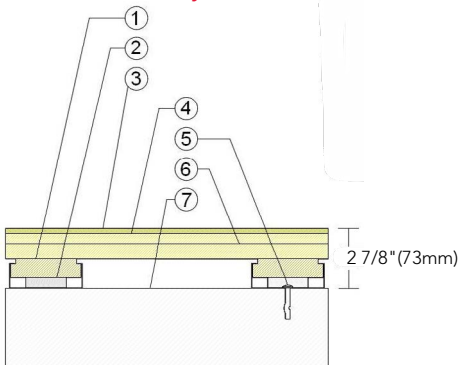
1. 1/4" (6mm) Aluminum Threshold
2. 1-1/2" (38mm) Perimeter Expansion Space
3. Steel Encased Plywood Sleeper
4. 1/2" (12mm) TriPower Pad
5. Solid Blocking at Doorway
6. 25/32" (20mm) MFMA Maple Flooring
7. Steel Concrete Anchor
8. 23/32" (19mm) Plywood Subfloor

## HARDBOARD Panel Floor Surface



1. Steel Encased Plywood Sleeper
2. 1/2" (12mm) TriPower Pad
3. Hardboard Faced Laminate Panel
4. Vapor Retarder
5. Steel Concrete Anchor
6. 23/32" (19mm) Plywood Subfloor

## HARDBOARD Layer Floor Surface



1. Steel Encased Plywood Sleeper
2. 1/2" (12mm) TriPower Pad
3. 1/4" (6mm) Hardboard Surface Layer
4. 15/32" (12mm) Added Plywood Layer
5. Steel Concrete Anchor
6. 23/32" (19mm) Plywood Subfloor
7. Vapor Retarder

### Anchorage

### Green Status and LEED Contributors

### Drill and Pin



- FSC® Certified Maple - MR
- FSC® Certified Subfloor Components - MR
- Environmental Quality - EQ
- Regional Materials - MR

### Resilience

1/2" (12mm) TriPower Pad

### Slab Depression

- 25/32" (20mm) Flooring - 2-7/8" (73mm)

### Optional Programme Systems

Programme I Stage  
Programme III Stage

### Optional Protection System

PowerVent™ Airflow System

### Subfloor Construction

Sleeper Plywood

### System Type

Fixed Resilient

### Testing Laboratory Partners



It is the policy of Infinity Wood Floors to continuously improve its line of products. Therefore, Infinity Wood Floors reserves the right to change, modify or discontinue systems, specifications and accessories of all products at any time without notice or obligation to purchaser.